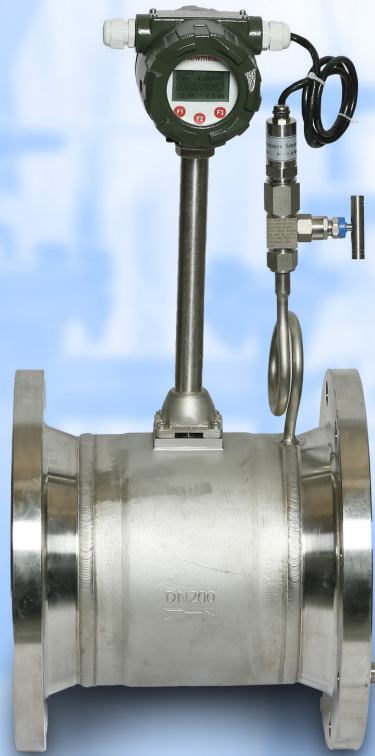




# **BRIL TECH**

Made to Measure

*CE Certified  
BT-VTM - size*



## **VORTEX FLOW METER**

(Velocity Flow Meter)

---

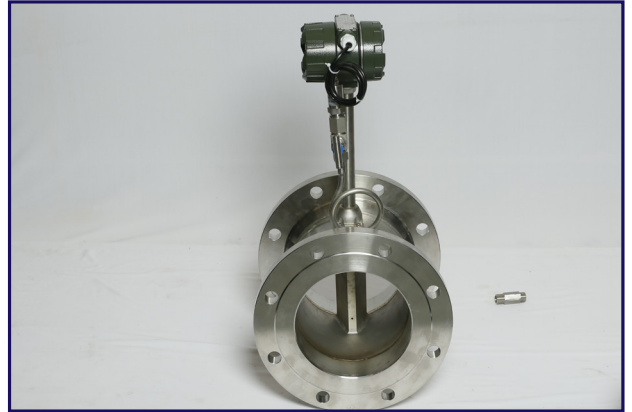
[www.broiltech.com.au](http://www.broiltech.com.au)

# VORTEX FLOW METER

(Velocity Flow Meter)

## Technical Data Sheet (General Spec.)

Enclosure	: SS 316 / Pa 66
Lining	: SS316 / PTFE / Pa66
Repeatability	: 0.02%
Accuracy (standard position)	: $\pm 0.5\%$ for liquid & 1% for gas
Maximum working pressure	: 30 Bar
Fluid & Ambient temperature	: $-20^{\circ}$ to $350^{\circ}\text{C}$
Connection	: Sandwich / Flange / Thread



### Display with various Output

Power voltage : 24 V DC

#### Output signal

Retransmit : (4 ~ 20) mA / Pulse  
 Communication : RS - 485 / HART Protocol / Alarm  
 Relay : High & Low Flow

#### Battery operated meter

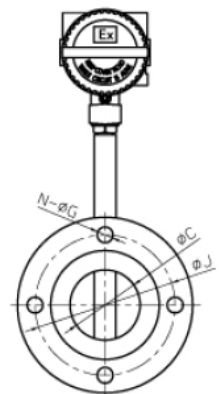
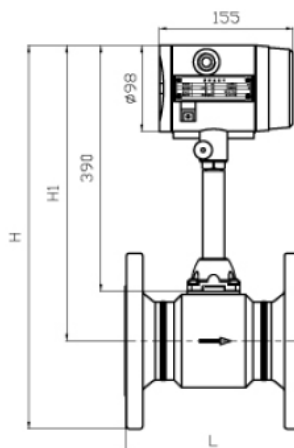
Power voltage : 3.6 V DC Lithium Batteries  
 Display mode : Double row LCD as below  
 Q X.XXXXXX (Seven Digit Instantaneous Flow  
 t/h, t/m, t/day, Kg/h, Kg/m, Kg/s, g/h, g/m, g/s, Nm<sup>3</sup>/h, SCFM)  
 XXXXXX.XXXXXX (Twelve Digit Cumulative Flow)  
 Cumulative flow : Automatically expand the display precision.  
 The cumulative flow values can be reset.  
 Power-fail protection : The instrument coefficient ensures that total  
 flow values for the past ten years are retained  
 even in the event of a power supply drop.



### Display Output (\*Please Check Display Manual)

#### Calculate pulse/liter at :

25%, 50%, 75% and 100% flow rate with pure  
 air at Atm or room pressure & temp



# VORTEX FLOW METER

(Velocity Flow Meter)

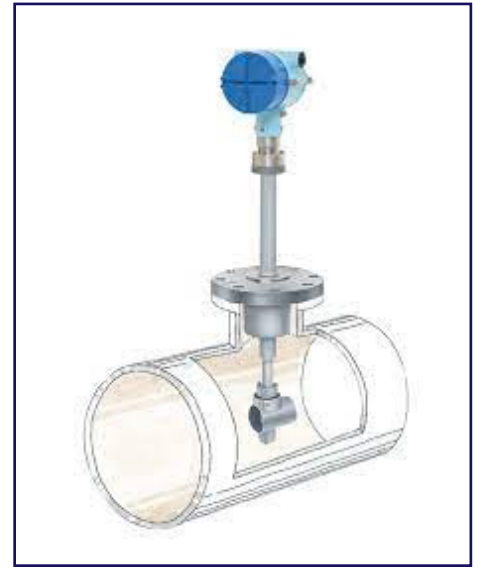
Model Range		
Model No	Water Flow Range (m <sup>3</sup> /hr)	Air Flow Range (m <sup>3</sup> /hr)
BT-VTM - 015	0.36 ~ 5.07	3.62 ~ 47.05
BT-VTM - 020	0.57 ~ 7.92	5.65 ~ 73.51
BT-VTM - 025	0.81 ~ 11.40	8.14 ~ 105.86
BT-VTM - 040	2.04 ~ 28.58	20.41 ~ 326.63
BT-VTM - 050	3.53 ~ 49.48	35.34 ~ 565.49
BT-VTM - 080	7.74 ~ 108.38	77.42 ~ 1238.64
BT-VTM - 100	13.30 ~ 186.22	133.02 ~ 2128.27
BT-VTM - 150	30.13 ~ 421.89	301.35 ~ 4821.57
BT-VTM - 200	56.55 ~ 791.68	565.49 ~ 9047.79
BT-VTM - 250	90.49 ~ 1266.87	904.91 ~ 14478.49
BT-VTM - 300	127.23 ~ 1781.28	1272.35 ~ 20357.52

Water : Value based on +20 °c

Air : Value based on +20 °c and 1.013 bara

FLANGE END DIMENSION					
Model No	L	D1	n X D 2	PCD	H
BT-VTM - 015	220	90	4 X 16	60.3	431
BT-VTM - 020	220	100	4 X 16	69.9	431
BT-VTM - 025	220	110	4 X 16	79.4	431
BT-VTM - 040	170	125	4 X 16	98.4	428
BT-VTM - 050	170	150	4 X 19	120.7	431
BT-VTM - 080	200	190	4 X 19	152.4	448
BT-VTM - 100	220	230	8 X 19	190.5	459
BT-VTM - 150	270	280	8 X 22.3	241.3	484
BT-VTM - 200	310	345	8 X 22.3	298.5	504
BT-VTM - 250	370	405	12 X 25.4	362.0	535
BT-VTM - 300	400	485	12 X 25.4	431.8	560

All the dimension in millimeter



# VORTEX FLOW METER

(Velocity Flow Meter)

## MODEL RANGE : ( SATURATED STEAM )

Model No	Pressure					
	1 barG	3 barG	5 barG	7 barG	10.5 barG	16 barG
BT-VTM - 015	5 ~ 37	6 ~ 71	9 ~ 103	10 ~ 136	12 ~ 192	15 ~ 279
BT-VTM - 020	7 ~ 87	10 ~ 167	14 ~ 244	16 ~ 321	19 ~ 446	23 ~ 619
BT-VTM - 025	11 ~ 149	15 ~ 284	19 ~ 416	22 ~ 546	28 ~ 754	33 ~ 891
BT-VTM - 040	27 ~ 373	36 ~ 712	49 ~ 1042	56 ~ 1368	69 ~ 1890	82 ~ 2234
BT-VTM - 050	47 ~ 646	63 ~ 1233	84 ~ 1805	97 ~ 2368	120 ~ 3272	142 ~ 3867
BT-VTM - 080	102 ~ 1414	138 ~ 2701	185 ~ 3953	212 ~ 5188	263 ~ 7167	311 ~ 8471
BT-VTM - 100	175 ~ 2430	238 ~ 4640	318 ~ 6792	365 ~ 8914	453 ~ 12315	534 ~ 14554
BT-VTM - 150	397 ~ 5505	539 ~ 10512	720 ~ 15387	826 ~ 20195	1025 ~ 27900	1210 ~ 32973
BT-VTM - 200	745 ~ 10330	1011 ~ 19726	1350 ~ 28874	1551 ~ 37895	1924 ~ 52355	2270 ~ 61875
BT-VTM - 250	1192 ~ 16530	1618 ~ 31567	2161 ~ 46205	2481 ~ 60641	3079 ~ 83779	3633 ~ 99013
BT-VTM - 300	1677 ~ 23242	2274 ~ 44384	3038 ~ 64967	3489 ~ 85265	4330 ~ 117798	5108 ~ 139218

Flow unit : Kg/hr





***Global  
Solution  
for your  
measuring***



**BRÖIL TECH**

Made to Measure

Suite 17/32 Hulme Court,  
Myaree, WA 6154

[www.broiltech.com.au](http://www.broiltech.com.au)