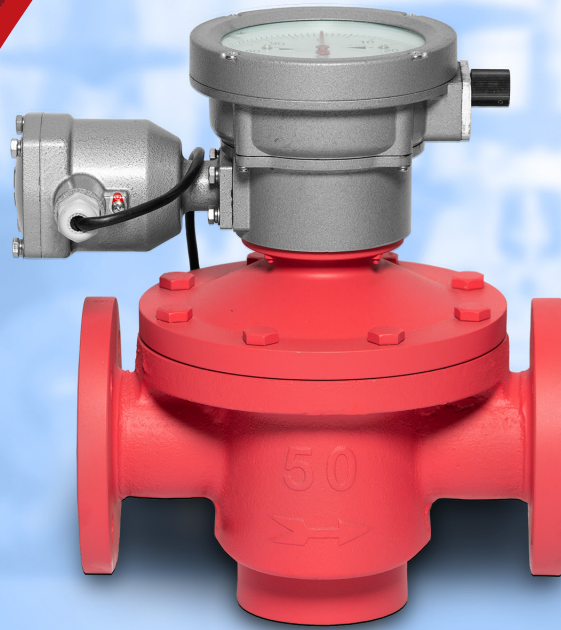




BR **IL TECH**

Made to Measure

*CE Certified
BT-RDOFM - size*



MECHANICAL OVAL GEAR FLOW SENSOR & METER

(Positive Displacement Flow Meter)

MECHANICAL OVAL GEAR FLOW METER

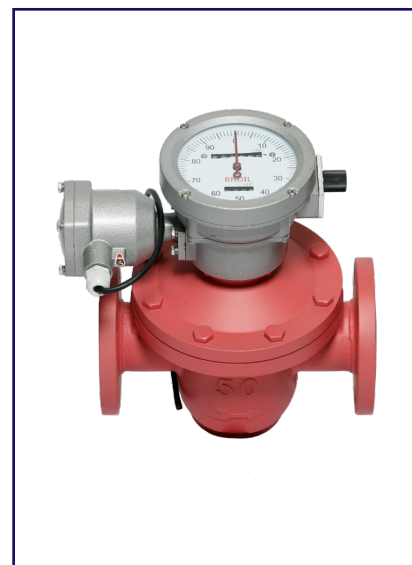
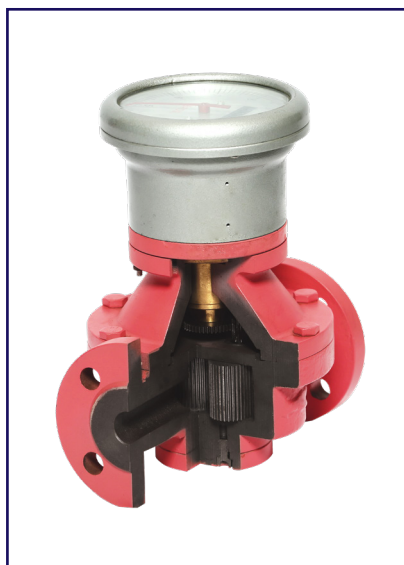
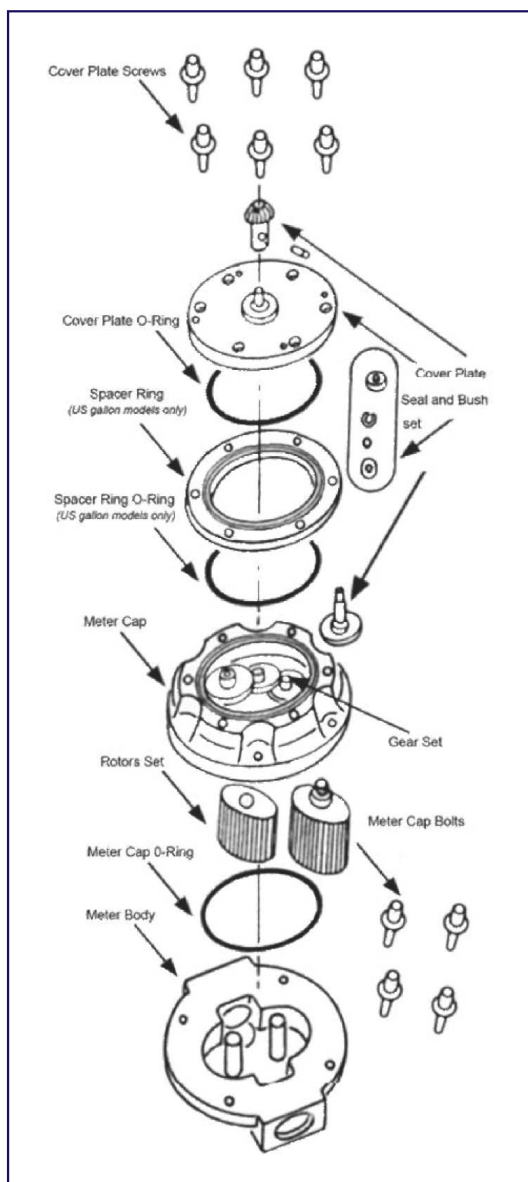
(Positive Displacement Flow Meter)

Technical Data Sheet

Enclosure	: Cast Iron / Stainless Steel
Rotor	: Aluminum / SS/ PPS
Shaft	: SS
Repeatability	: 0.03%
Accuracy (standard position)	: +/- 0.5 FSD
Maximum working pressure	: 2 Mpa
Fluid & Ambient temperature	: -40° to 80° C
Connection	: Flange
Viscosity	: 1000 cps maximum

Model Range

Model No	Connection (f)	Range
BT-RDOFM - 015	½"	0.15 ~ 1.5 m3/h
BT-RDOFM - 020	¾"	0.3 ~ 3.0 m3/h
BT-RDOFM - 025	1"	1 ~ 6 m3/h



MECHANICAL COUNTER

Resettable counter : 9999 Ltr Max

Non Resettable counter : 999999 x 10 Ltr Max



***Global
Solution
for your
measuring***



BRÖIL TECH

Made to Measure

Suite 17/32 Hulme Court,
Myaree, WA 6154

www.broiltech.com.au